

ORDINANCE NO. 14/15-A-05

ROCK RIVER WATER RECLAMATION DISTRICT ORDINANCE ANNEXING CERTAIN TERRITORIES TO THE ROCK RIVER WATER RECLAMATION DISTRICT

WHEREAS, pursuant to Section 23.3 and 23.5 of the 1917 act, as amended (70 ILCS 2405/23.3 and 70 ILCS 2405/23.5), it is required that an ordinance annexing additional contiguous territories served or wholly bounded by the Rock River Water Reclamation District, and containing 60 acres or less, be passed by the Board of Trustees of the Rock River Water Reclamation District, in order that said contiguous territories wholly bounded by the District and containing 60 acres or less be annexed; AND

WHEREAS, pursuant to Section 23.2 of the 1917 act, as amended (70 ILCS 2405/23.2), it is required that an ordinance annexing contiguous territories dedicated or used for highway purposes, which territories are not within any other sanitary district, be passed by the Board of Trustees of the Rock River Water Reclamation District, in order that said contiguous territories dedicated or used for highway purposes be annexed.

NOW, THEREFORE, BE IT ORDAINED, by the Board of Trustees of the Rock River Water Reclamation District, Rockford, Illinois, as follows:

SECTION 1. That the following additional contiguous territories served and wholly bounded by the Rock River Water Reclamation District, and containing 60 acres or less; and that the following additional contiguous territories dedicated or used for highway purposes, which territories are not within any other sanitary district, be and the same is hereby annexed to the Rock River Water Reclamation District.

A tract of land located in the Northeast Quarter of Section 15, Township 44 North, Range 2 East, Third Principal Meridian, being more specifically described as follows:

Lots 9 thru 11 as designated upon Plat No. 1 Springcreek Crossing, according to the Plat recorded in Book 40 of Plats on page 176A in the Recorder's Office of Winnebago County, Illinois; situated in Winnebago County, State of Illinois.

And

Lots 14, 15, 17 thru 21 as designated upon Plat No. 3 Springcreek Crossing, according to the Plat recorded in Book 41 of Plats on page 95A in the Recorder's Office of Winnebago County, Illinois; situated in Winnebago County, State of Illinois.

And

Lot 26 as designated upon Plat No. 4 Springcreek Crossing, according to the Plat recorded in Book 43 of Plats on page 3 in the Recorder's Office of Winnebago County, Illinois; situated in Winnebago County, State of Illinois.

And

Lot 28 as designated upon Plat No. 5 Springcreek Crossing, according to the Plat recorded in Book 44 of Plats on page 53A in the Recorder's Office of Winnebago County, Illinois; situated in Winnebago County, State of Illinois.

And

Lots 29 thru 33 as designated upon Plat No. 6 Springcreek Crossing, according to the Plat recorded in Book 49 of Plats on page 97A in the Recorder's Office of Winnebago County, Illinois; situated in Winnebago County, State of Illinois.

And

All contiguous public road right-of-way.

Said tracts containing 29.57 acres more or less; Said tracts containing those properties commonly denoted by PINS 12-15-227-008 thru 011 & 018, 12-15-228-005, 006, 008 thru 010, 12-15-229-003 thru 006 & 008 and 12-15-230-001.

SECTION 2. That the owners of the land described in Section 1 of this Ordinance assume a proportionate share of the bonded indebtedness of the Rock River Water Reclamation District.

SECTION 3. That this Ordinance shall be in full force and effect immediately on its passage and approval.

SECTION 4. That a copy of this Ordinance annexing the territories, together with an accurate map of the annexed territory, certified as correct by the Clerk of the District, be filed with the County Clerk of Winnebago County, Illinois.



President, Board of Trustees
Rock River Water Reclamation District

ATTEST:



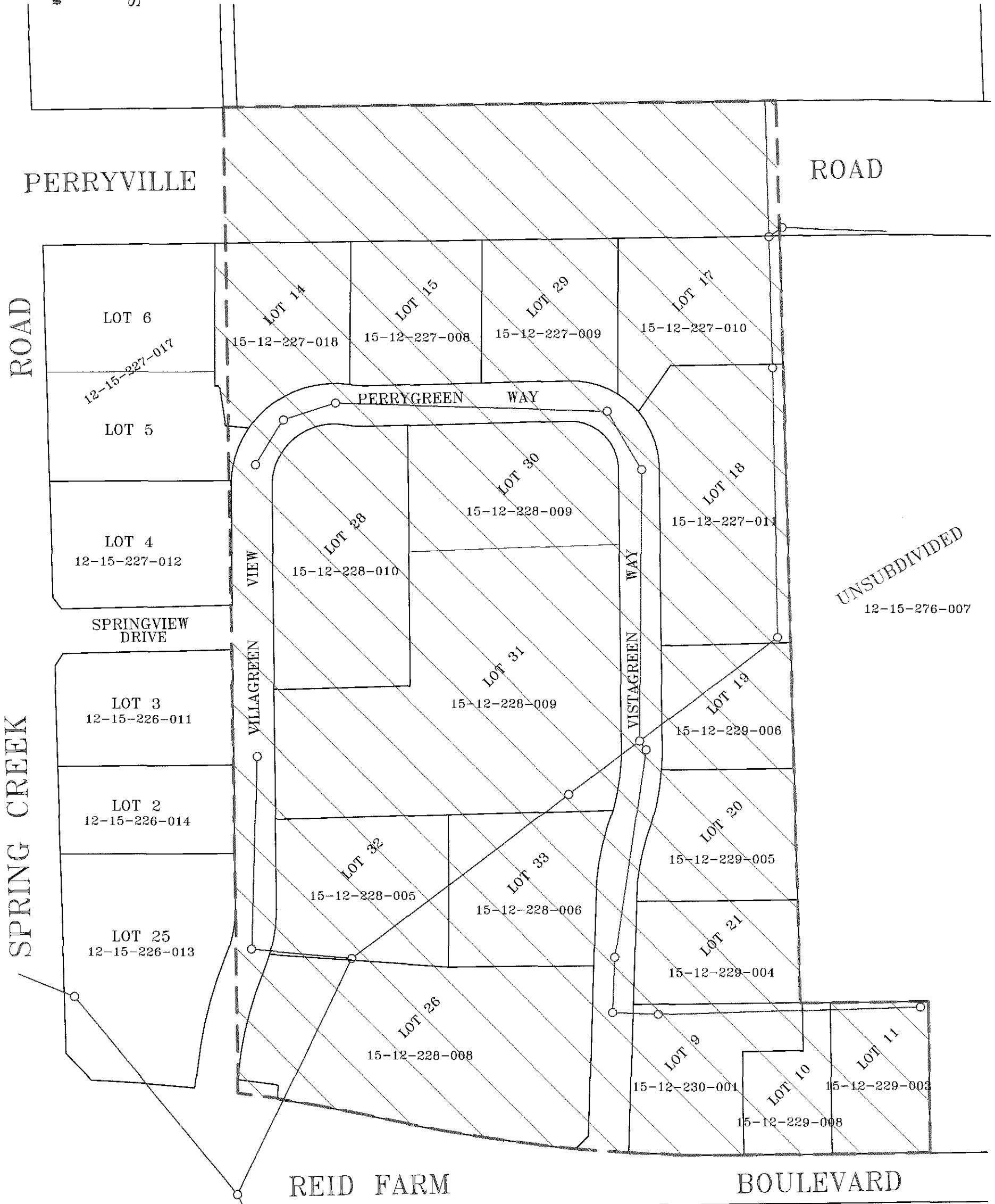
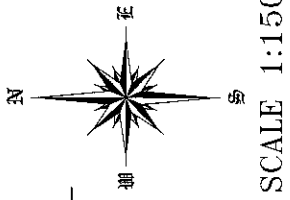
Clerk, Board of Trustees
Rock River Water Reclamation District

PASSED AND APPROVED July 28, 2014

After recording, return to:
Mr. Eric Haglund
Rock River Water Reclamation District
P.O. Box 7480
Rockford, IL 61126-7480
(815) 387-7676

ANNEXATION ORDINANCE NO. 14/15-A-05

PART OF THE NE1/4 OF SECTION 15, T44N, R2E, OF THE 3rd P.M.

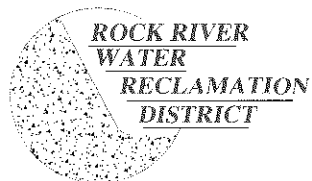


LEGEND

EXISTING RRWRD BOUNDARY: - - - - -

PROPOSED ANNEXATION: +/- 29.57 ACRES 

SANITARY SEWER: 



ROCK RIVER WATER RECLAMATION DISTRICT		
SPRINGCREEK CROSSING		
ROCKFORD		
FULLY SERVED/WHOLLY BOUNDED		
+/- 29.57 ACRES		
DRAWN BY: EJH	DATE: 07-03-2014	SHEET NO: 1