

## **ORDINANCE NO. 14/15-A-14**

### **ROCK RIVER WATER RECLAMATION DISTRICT ORDINANCE ANNEXING CERTAIN TERRITORIES TO THE ROCK RIVER WATER RECLAMATION DISTRICT**

WHEREAS, pursuant to Section 23.3 and 23.5 of the 1917 act, as amended (70 ILCS 2405/23.3 and 70 ILCS 2405/23.5), it is required that an ordinance annexing additional contiguous territories served or wholly bounded by the Rock River Water Reclamation District, and containing 60 acres or less, be passed by the Board of Trustees of the Rock River Water Reclamation District, in order that said contiguous territories wholly bounded by the District and containing 60 acres or less be annexed; AND

WHEREAS, pursuant to Section 23.2 of the 1917 act, as amended (70 ILCS 2405/23.2), it is required that an ordinance annexing contiguous territories dedicated or used for highway purposes, which territories are not within any other sanitary district, be passed by the Board of Trustees of the Rock River Water Reclamation District, in order that said contiguous territories dedicated or used for highway purposes be annexed.

NOW, THEREFORE, BE IT ORDAINED, by the Board of Trustees of the Rock River Water Reclamation District, Rockford, Illinois, as follows:

SECTION 1. That the following additional contiguous territories served and wholly bounded by the Rock River Water Reclamation District, and containing 60 acres or less; and that the following additional contiguous territories dedicated or used for highway purposes, which territories are not within any other sanitary district, be and the same is hereby annexed to the Rock River Water Reclamation District.

A tract of land located in the Southeast Quarter of Section 35, Township 45 North, Range 2 East, Third Principal Meridian, being more specifically described as follows:

Lot 1 as designated upon the Amended Plat No. 1 of Loves Park Corporate Center, according to the Plat recorded in Book 49 of Plats on page 61A in the Recorder's Office of Winnebago County, Illinois; situated in Winnebago County, State of Illinois.


All contiguous public road right-of-way.

Said tracts containing 7.51 acres more or less; Said tracts containing those properties commonly denoted by PIN 08-35-400-013.

SECTION 2. That the owners of the land described in Section 1 of this Ordinance assume a proportionate share of the bonded indebtedness of the Rock River Water Reclamation District.

SECTION 3. That this Ordinance shall be in full force and effect immediately on its passage and approval.

SECTION 4. That a copy of this Ordinance annexing the territories, together with an accurate map of the annexed territory, certified as correct by the Clerk of the District, be filed with the County Clerk of Winnebago County, Illinois.

  
\_\_\_\_\_  
President, Board of Trustees  
Rock River Water Reclamation District

ATTEST:

  
\_\_\_\_\_  
Asst. Clerk, Board of Trustees  
Rock River Water Reclamation District

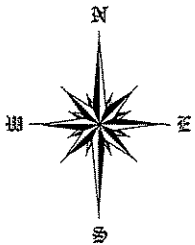
PASSED AND APPROVED November 24, 2014

After recording, return to:

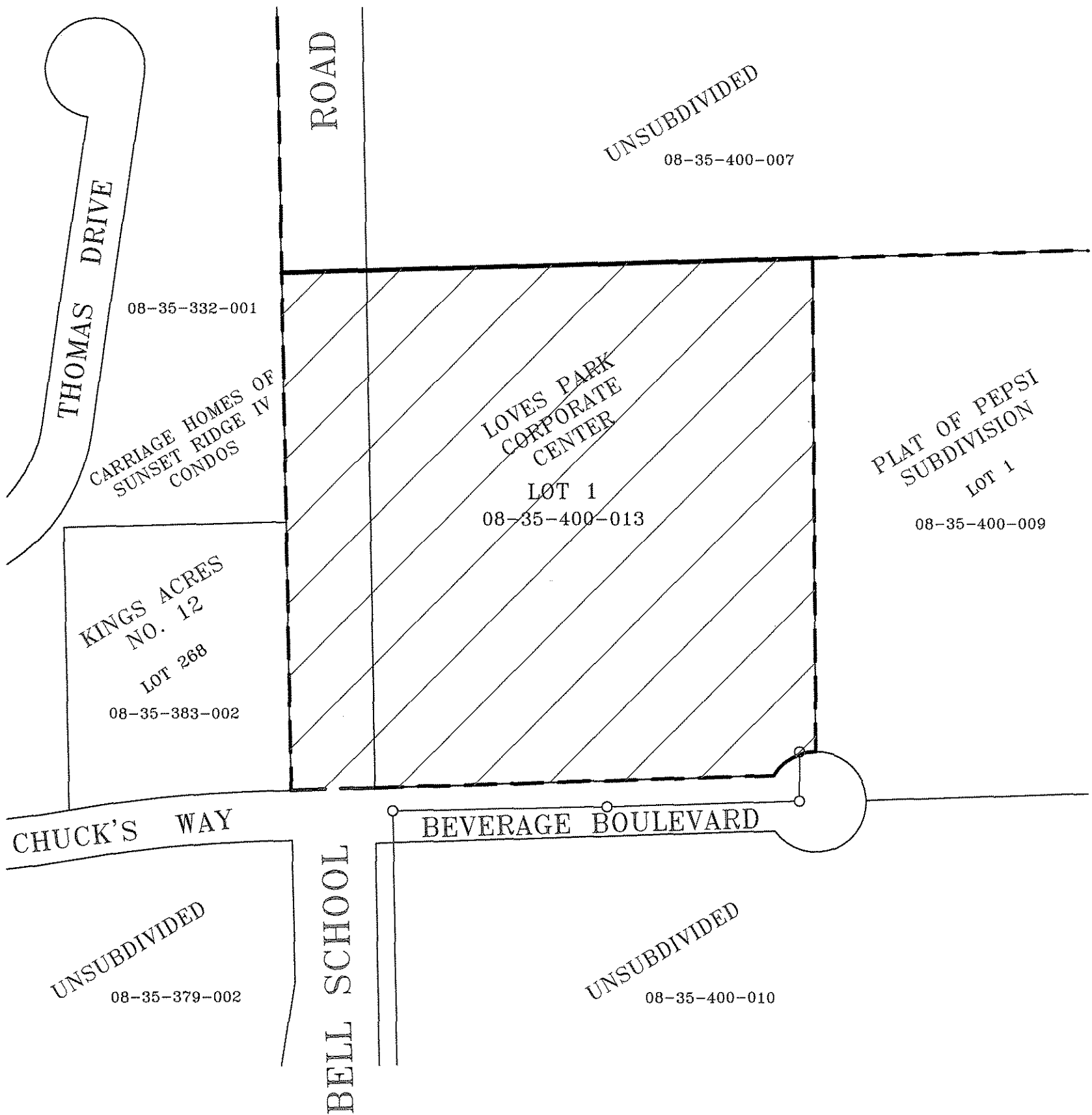
Mr. Eric Haglund  
Rock River Water Reclamation District  
P.O. Box 7480  
Rockford, IL 61126-7480  
(815) 387-7676

# ANNEXATION ORDINANCE NO. 14/15-A-14

PART OF THE SE1/4 OF SECTION 35, T45N, R2E, OF THE 3<sup>rd</sup> P.M.



SCALE 1:150

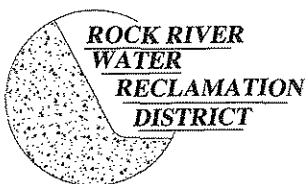


### LEGEND

EXISTING RRWRD BOUNDARY: - - - - -

PROPOSED ANNEXATION: +/- 7.51 ACRES 

SANITARY SEWER: 



ROCK RIVER WATER RECLAMATION DISTRICT		
LOVES PARK CORPORATE CENTER		
LOVES PARK		
FULLY SERVED		
+/- 7.51 ACRES		
DRAWN BY: EJH	DATE: 11-06-2014	SHEET NO: 1